



## Thatched Cottage Main Road

Heath, Chesterfield, S44 5RX

Guide Price £325,000



# Thatched Cottage Main

Heath, Chesterfield, S44 5RX

£325,000 - £335,000 (Guide price) Welcome to Thatched Cottage, a truly enchanting and exceptionally rare Grade II listed home, nestled in the very heart of the picturesque village of Heath. Steeped in centuries of history and overflowing with charm, this captivating cottage is one of the area's most treasured landmark homes; a quintessential piece of old England hidden amongst Derbyshire countryside.

Believed to date back to the late 16th century, Thatched Cottage is thought to have stood proudly in Heath for well over 400 years. Officially listed in 1979 for its architectural and historic significance, the property remains one of the village's most distinctive heritage homes. Constructed using traditional cruck-frame craftsmanship, an ancient medieval building technique using dramatic curved timber beams, the cottage still retains surviving exposed crucks internally, a remarkable reminder of its extraordinary past and a feature rarely found in homes today.

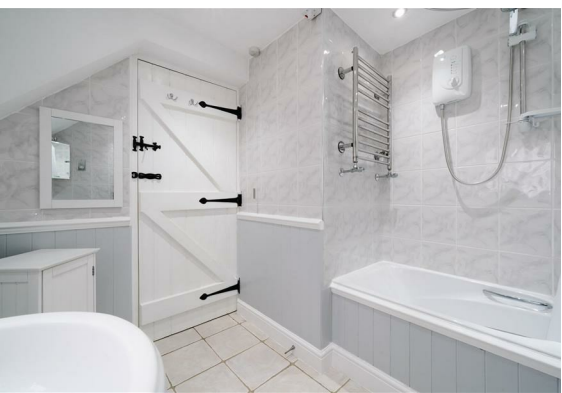
Behind its idyllic thatched roof and storybook façade lies 721 sqft of beautifully characterful accommodation arranged across two floors. Rich in atmosphere and period detail, the home showcases an exquisite collection of original features throughout; from exposed stonework and aged timbers to vaulted ceilings and cosy cottage proportions that create an undeniable sense of warmth and romance.

The dining kitchen blends rustic charm with modern practicality, complete with a Rangemaster oven and direct access into the delightful cottage garden, while the inviting lounge centres around a striking exposed stone feature wall, the perfect setting for winter evenings beside the fire. The ground floor bathroom continues the home's timeless appeal, whilst the beautifully presented bedroom enjoys a magnificent vaulted ceiling, adding further drama and character to this truly magical countryside retreat.

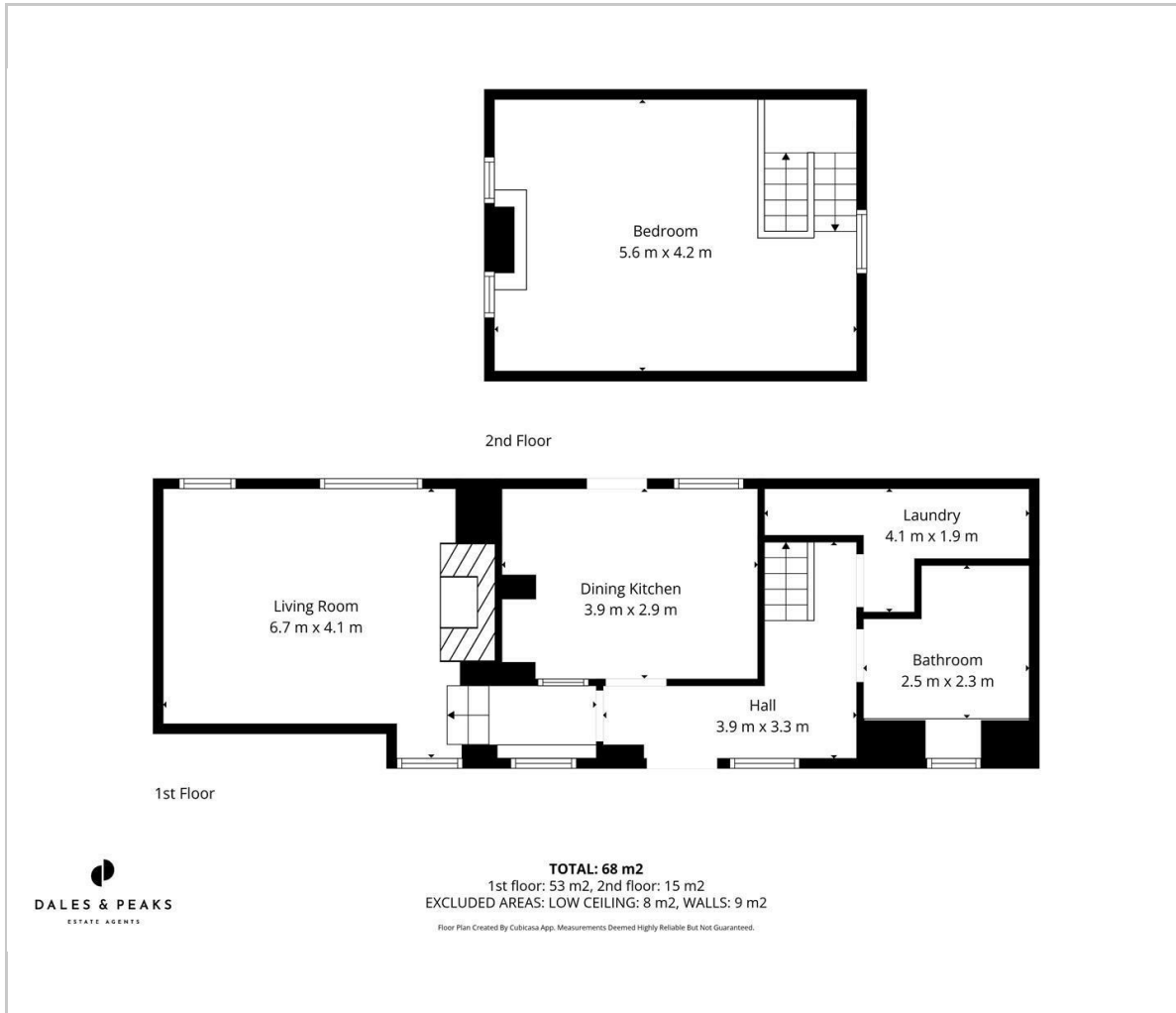
## Externally

**Dales & Peaks ForwardMove**  
please read





## Floor Plan

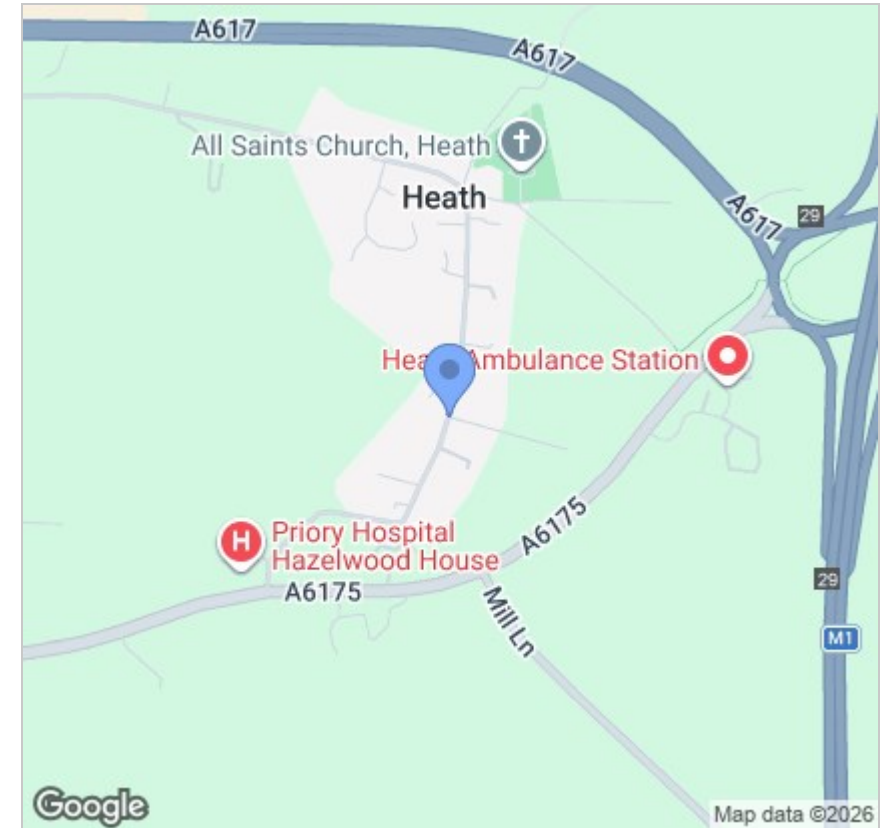


## Viewing

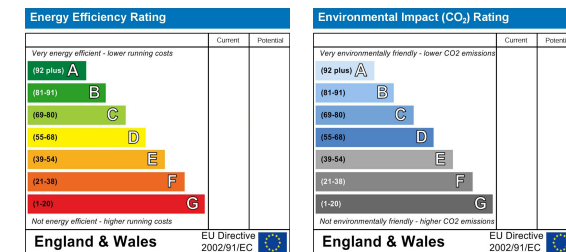
Please contact our Chesterfield Office on 01246 567540 if you wish to arrange a viewing appointment for this property or require further information.

These particulars, whilst believed to be accurate are set out as a general outline only for guidance and do not constitute any part of an offer or contract. Intending purchasers should not rely on them as statements of representation of fact, but must satisfy themselves by inspection or otherwise as to their accuracy. No person in this firm's employment has the authority to make or give any representation or warranty in respect of the property.

## Area Map



## Energy Efficiency Graph



131 Chatsworth Road, Chesterfield, Derbyshire, S40 2AP  
T: 01246 567540



E: info@dalesandpeaks.co.uk  
www.dalesandpeaks.co.uk